

Model Code/s:

EBF95W
EBF95S

Product:

Bar Fridge

Document:

User Manual

Esatto



Dear Customer,

Congratulations on purchasing your new fridge. The *Esatto* brand is proudly distributed within Australia by Residentia Group Pty Ltd.

Please refer to the warranty card at the rear of this manual for information regarding your product's parts and labour warranty, or visit us online at www.residentiagroup.com.au.

At Residentia Group, we are customer obsessed and our Support Team are there to ensure you get the most out of your appliance. Should you want to learn more about your fridge such as temperature settings and importantly taking care of it when cleaning, our Support Team are here to help. You can use our online Support Centre at anytime by visiting <http://support.residentiagroup.com.au>, or you can contact us via phone by dialling: 1300 11 HELP (4357).

It is important that you read through the following use and care manual thoroughly to familiarise yourself with the installation and operation requirements of your appliance to ensure optimum performance.

Again, thank you for choosing an *Esatto* appliance and we look forward to being of service to you.

Kind Regards,
The Residentia Team



Residentia

T 1300 11 4357
E info@residentiagroup.com.au
W residentiagroup.com.au
ACN 600 546 656

Residentia Group
PO Box 581
Stanhope Gardens
NSW Australia 2768

User Manual:

Esatto

Contents:

	Page:
Safety Instructions	4
Your Esatto Bar Fridge	5
Installation Instructions	5
Operating your Bar Fridge	7
Cleaning and Maintenance	8
Troubleshooting	10
Tips/Recommendations	11
Warranty Information	12



Safety Instructions

- This appliance is not intended for use by persons (including children) with reduced physical, sensory or mental capabilities, or lack of experience and knowledge, unless they have been given supervision or instruction concerning use of the appliance by a person responsible for their safety.
- Children should be supervised to ensure that they do not play with the appliance.
- Ensure the appliance has adequate ventilation, particularly when used in a built-in application.
- If the supply cord is damaged in any way, it must be replaced by the manufacturer, its service agent or a qualified and licensed electrician, before use.
- This appliance is intended to be used within a domestic household environment.
- Never store explosive or flammable substances (such as aerosol cans with a flammable propellant) within or around this appliance.
- The fridge is designed to operate on a single phase power supply with a voltage range of 220~240V/50Hz.

UNPACKING

- During transportation, protective packaging was used to protect the appliance against any damage. After unpacking, please dispose of all elements of packaging in a way that will not cause damage to the environment. All materials used for packaging the appliance are environmentally friendly; they are 100% recyclable and are marked with the appropriate symbol.

Caution! During unpacking, the packaging materials (polythene bags, polystyrene pieces, etc.) should be kept out of reach of children.

DISPOSAL OF THE APPLIANCE

- Old appliances should not simply be disposed of with normal household waste, but should be delivered to a collection and recycling centre for electric and electronic equipment. A symbol shown on the product, the instruction manual or the packaging shows that it is suitable for recycling.
- Materials used inside the appliance are recyclable and are labelled with information concerning this. By recycling materials or other parts from used devices you are making a significant contribution to the protection of our environment.
- Information on appropriate disposal centres for used devices can be provided by your local authority.

R600a ISO-BUTANT REFRIGERANT

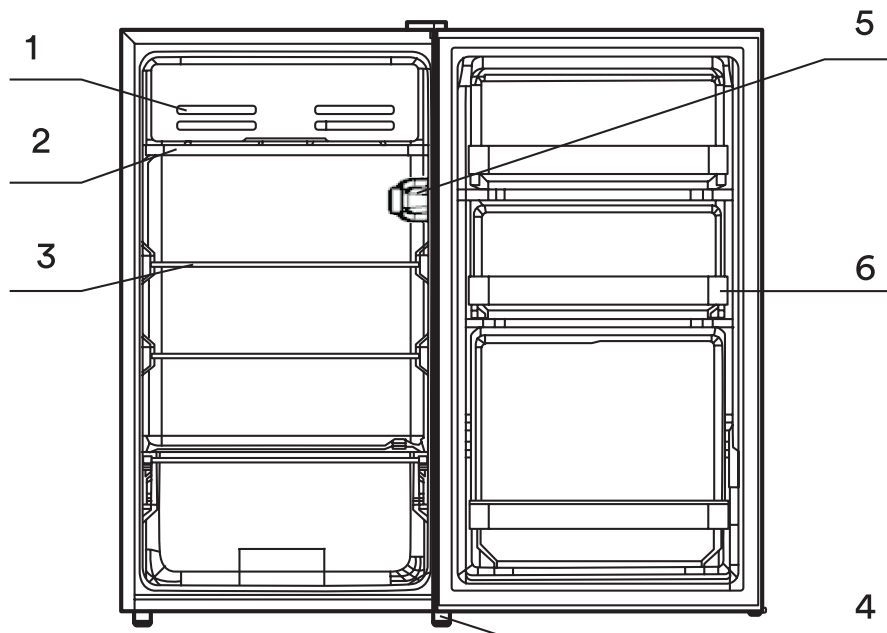
- Hydrocarbon refrigerants have excellent refrigerant properties and minimal low global warming potential and no ozone depletion potential.
- This appliance contains a small quantity of flammable, non-synthetic R600a refrigerant:
 - Hydrocarbon refrigerants cannot be 'retrofitted' to the appliance that has not been designed and approved to use that type of refrigerant.
 - Ensure that the tubing of the refrigerant circuit is not damaged during transportation and installation.
 - Leaking refrigerant may cause eye injuries or could ignite.
 - The room for installing the appliance must be at least 1m³ per 8g of refrigerant. The amount of refrigerant in the appliance can be found on the rating plate attached to the appliance.

RISK OF FIRE

- If the refrigerant circuit should become damaged. Avoid open flames and sources of ignition. Disconnect the appliance from the mains power. Thoroughly ventilate the room in which the appliance is situated for several minutes.

Your Esatto Bar Fridge

- | | |
|--------------------|-------------------|
| 1 Small door | 4 Adjustable foot |
| 2 Drain tray | 5 Thermostat |
| 3 Steel wire shelf | 6 Wire steel bar |



Installation Instructions

BEFORE USING YOUR BAR FRIDGE

- Remove the exterior and interior packing.
- Keep away from heat and avoid direct sunlight.
- Do not place the fridge in moist or watery places to prevent rust or reduction of insulating effect.
- Before connecting the bar fridge to the power source, let it stand upright for approximately 1 hour. This will reduce the possibility of a malfunction in the cooling system from handling during transportation.
- Clean the interior surface with lukewarm water using a soft cloth.

INSTALLATION LOCATION:

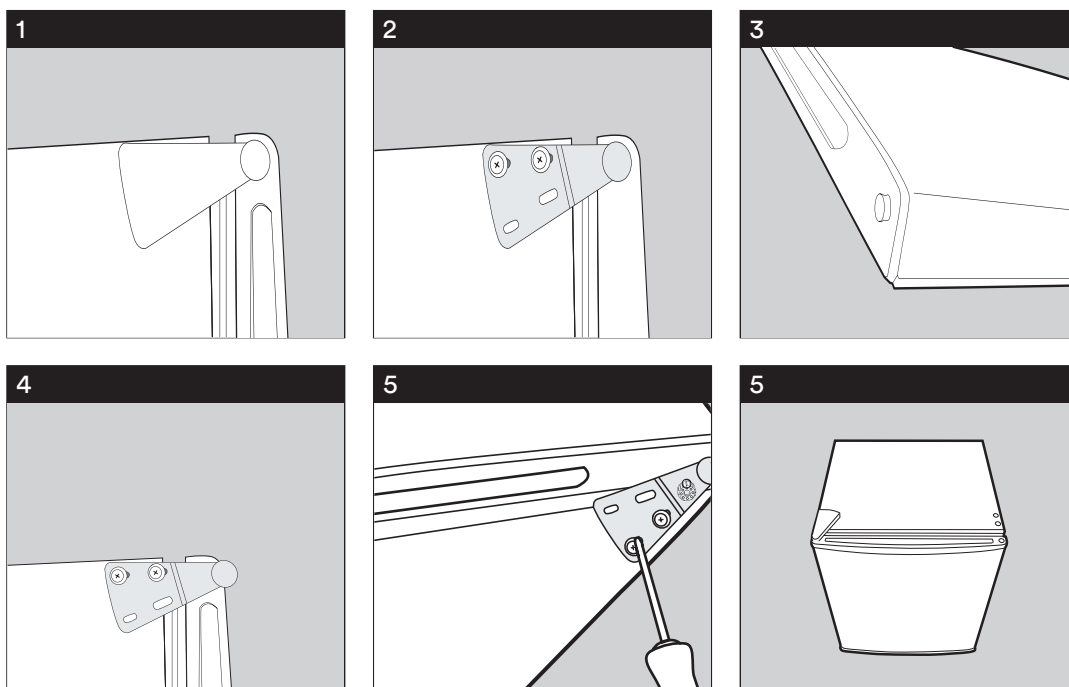
- When selecting a position for your bar fridge you should make sure that the floor is level, and that the room is well ventilated with an average room temperature of between 16° and 35°.
- Always avoid locating your bar fridge near a heat source, such as a heater.
- Also avoid direct sunlight as it may increase the electrical consumption.
- Extreme cold ambient temperatures may also cause the unit not to perform properly. This unit is not designed for use in a garage or outdoor installation.
- Do not drape the unit with any covering.
- When installing the unit, ensure that 10cm of free space is left at both sides, 10cm at the rear and 30cm at the top of the unit. This will allow cold air to circulate around the wine cooler and improve the efficiency of the cooling process.
- The door can be hinged to open to the right or to the left, depending on what better suits the location.
- Please ensure there is adequate space for the door to fully open.
- Adjust the two levelling feet to ensure that the bar fridge is horizontally and vertically level.

REVERSING THE DOOR SWING

Tools Required: Phillips head screwdriver.

- Start by ensuring the bar fridge is unplugged and empty.
- Adjust the two levelling feet to their highest position.
- To remove the door it is necessary to tilt the bar fridge backwards. Rest the fridge against something solid to prevent it from slipping whilst removing the door.
- All parts that are removed will be used when re-assembling the door hinge, so ensure they are all kept safe .
- DO NOT lay the bar fridge on its back or sides as this may damage the coolant system.
- We recommend that this is a two person procedure.

1. Remove the plastic cover from the top door hinge.
2. Unscrew the three screws from the bottom bracket and remove the hinge bracket from the opposite side. Place this to one side.
3. Slide the fridge door down approximately 15cm and remove from the top hinge, lifting the door away from the fridge.
4. Remove the two screws from the top bracket and replace the bracket using the same screws on to the opposite side. Note: You will need to remove the plastic cover caps from the opposite side first.
5. Slide the fridge door back onto the top hinge, ensuring that it is the correct way up. Then screw the bottom hinge bracket into place, securing the door in place.
6. Fit the plastic cover caps and ensure that the door is aligned both vertically and horizontally, before tightening the bottom hinge. Re-adjust the levelling feet.



Operating Your Bar Fridge

TEMPERATURE CONTROL

- Your bar fridge has one control for regulating the temperature. The temperature control is located on the right hand side wall of the interior.
- Setting “Off” UnitOff
 - Setting “Min” Less Cool Temperature
 - Setting “Med” Normal Operation (adequate for most situations)
 - Setting “Max” Coolest Temperature
- Depending on your room’s ambient temperature, you may need to adjust the temperature setting to achieve your desired temperature.
- The number on the thermostat dial does not directly represent the temperature. Instead, the larger the number is, the lower the fridge interior temperature will be.
- Note:** If the unit is unplugged, lost power, or turned off; you must wait 3 to 5 minutes before restarting the unit.
- If you choose to change the thermostat setting, adjust thermostat control by one numerical increment at a time. Allow several hours for temperature to stabilize between adjustments.

NOISE FROM YOUR BAR FRIDGE

- You may notice that your bar fridge makes some unusual noises from time to time. Most of these are perfectly normal, but you should be aware of them!
- These noises are caused by the circulation of the refrigerant liquid in the cooling system. This is not a fault and will not affect the performance of your unit and is common with all modern fridges.

DEFROSTING YOUR BAR FRIDGE

- Defrost the freezing compartment whenever the layer of frost on the surface of the evaporator reaches 3 or 4 mm.
- Important!** Do not use boiling water because it may damage the plastic parts. In addition, never use a sharp or metallic instrument to remove frost as it may damage the cooling coils and will void the warranty. We recommend using a plastic scraper.
- When defrosting, remove all food and set the thermostat at the “OFF” position.
- Put the drip tray under the evaporator to collect melted water.
- After the frost has melted, discard the melted water and dry up the interior of refrigerator.
- The refrigerator can now be restarted by turning its thermostat to the desired setting.
- Helpful Tip.** Defrosting usually takes a few hours. Leaving the door open will help speed the process. Also, pouring warm water (not boiling) on the ice/frost will help speed melting. If you must use a scraper- please use caution— it is very easy to damage the fridge compartment and void your warranty.

Cleaning and Maintenance

By ensuring proper cleaning and maintenance of your Esatto Bar Fridge, you can ensure that it will have a long and fault free operation.

CLEANING YOUR BAR FRIDGE

- Warning! To avoid an electric shock, always unplug your bar fridge before cleaning. Ignoring this warning may result in death or serious injury.
- Caution.** Before using any cleaning products, please read and follow the manufacturer's instructions and warnings to avoid any damage to your Bar Fridge or personal injury.
- Upon installation of your new appliance, it is recommended that it be cleaned thoroughly.
- Dust behind the refrigerator and on the ground should be cleaned regularly to improve the cooling effect and energy saving.
- The interior of the refrigerator should be cleaned regularly to avoid odor.
- Soft towels or sponge dipped in water and non-corrosive neutral detergents are suggested for cleaning.
- The freezer should be cleaned with clean water and a dry cloth. Open the door for natural drying before the power is turned on.

POWER FAILURE

- Foods can be preserved for a couple of hours even in summer in case of power failure; it is recommended to reduce the frequency of opening door and do not put fresh foods into the freezer.

VACATION TIME

- Remove all the food.
- Unplug the bar fridge.
- Clean the bar fridge using the instructions above.
- Leave the door open slightly to avoid possible formation of condensation, mould, or odours.
- Use extreme caution in the case of children. The unit should not be accessible to children.
- Short vacations: Leave the bar fridge operating during vacations of less than three weeks.
- Long vacations: If the bar fridge will not be used for several months, remove all food and unplug the power cord. Clean and dry the interior thoroughly. To prevent odour and mould growth, leave the door open slightly blocking it open if necessary or have the door removed.

MOVING YOUR BAR FRIDGE

- Remove all the food.
- Securely tape down all loose items inside your fridge.
- Remove the rollers to prevent damage.
- Tape the doors shut.
- Be sure the fridge stays in the upright position during transportation. Do not turn upside, horizontally place or vibrate the refrigerator, the carrying angle can not be greater than 45°.
- Note.** Continuous operation is recommended when the refrigerator is started. Please do not move the refrigerator under normal circumstances so as not to affect the refrigerator's service life.

ENERGY SAVING TIPS

- The bar fridge should be located in the coolest area of the room, away from heat producing appliances or heating ducts, and out of the direct sunlight.
- Let hot foods cool to room temperature before placing in the bar fridge. Overloading the fridge forces the compressor to run longer.
- Be sure to wrap foods properly, and wipe containers dry before placing them in the bar fridge. This cuts down on frost build-up inside the fridge/fridge.
- Liners interfere with cold air circulation, making the fridge less efficient.
- Organize and label food to reduce door openings and extended searches. Remove as many items as needed at one time, and close the door as soon as possible.

SERVICING

- Your bar fridge should only be serviced by an authorised service agent of the Residentia Group.
- Under no circumstances should you attempt to repair or alter the appliance yourself. Repairs carried out by inexperienced persons may cause personal injury or serious malfunction.

OPERATION IN CASE OF EMERGENCY

In the event of an emergency you should:

- Switch off the bar fridge at the thermostat and then unplug the fridge at the power outlet.
- Call the Residentia Support Team on 1300 11 HELP (4357).
- Some minor faults can be fixed by referring to the instructions given in the Troubleshooting section below. There is also a self-help section online at <http://www.residentiagroup.com.au>.

Troubleshooting

The following simple issues can be handled by the user.

Please call the after-sale service department if the issues are not settled.

Fault	Possible Cause	Solution
The Bar Fridge doesn't operate.	Not plugged in.	Plug the Bar Fridge in.
	The circuit breaker has tripped, or a fuse blown.	Replace any blown fuses or reset tripped circuit breakers.
	The fridge temperature is set at "OFF".	Increase the fridge temperature setting.
The compressor turns on and off frequently.	The room temperature is hotter than normal.	Try to bring the room temperature down.
	A large amount of food has been added to the fridge.	Give the Bar Fridge time to return back to your desired temperature setting.
	The door is left open too often.	Try to minimise the door being opened for sometime.
	The door is not closed completely.	Close the door completely and ensure a complete seal.
	The temperature control is not set properly.	Change the temperature control to your desired setting.
	The door gasket doesn't seal properly.	Try cleaning the door gasket seals with warm soapy water. If this still doesn't improve the seal, you may need replacement gasket seals from either a refrigeration specialist or Residentia Group.
	The fridge doesn't have the correct clearances.	Ensure your Bar Fridge has been installed in an appropriate space and has the correct clearances (as per this instruction manual).
The temperature inside the Bar Fridge is too warm.	There has been a recent power outage.	Give the fridge a few hours to return to the desired temperature setting.
	The temperature control is set too warm.	Turn the temperature control down to a cooler setting and leave for several hours for the temperature to stabilise.
	The door is kept open too long or is opened too frequently.	Try to minimise the door being opened for sometime.
	The door gasket doesn't seal properly.	Try cleaning the door gasket seals with warm soapy water. If this still doesn't improve the seal, you may need replacement gasket seals from either a refrigeration specialist or Residentia Group.
	The bar fridge doesn't have the correct clearances.	Ensure your Bar Fridge has been installed in an appropriate space and has the correct clearances (as per this instruction manual).
The temperature inside the Bar Fridge is too cold.	There has been a recent power outage.	Give the fridge a few hours to return to the desired temperature setting.
	The temperature control is set too cold.	Turn the temperature control to a warmer setting and allow several hours for the temperature to stabilise.
There is a popping or cracking sound when the compressor comes on.	Metal parts undergo expansion and contraction, as in hot water pipes.	This is normal and the sound will level off or disappear as the fridge continues to run.
There is a bubbling or gurgling sound like water boiling.	The refrigerant (used to cool the fridge) is circulating throughout the system.	This is normal.
Odor	Odorous foods are not sealed. Foods have become rotten. The interior is dirty.	Odorous foods should be closely wrapped. Rotten foods should be thrown out. Ensure the interior is clean.

Tips

- The refrigerator enclosure may emit heat during operation specially in summer, this is caused by the radiation of the condenser, and it is a normal phenomenon.
- **Condensation:** Condensation will be detected on the exterior surface and door seals of the freezer when the ambient humidity is large. This is a normal phenomenon and the condensation can be wiped away with a dry towel.
- **Airflow sound:** Refrigerants circulating in the refrigerant lines will produce eruptions of sound or 'grunts' which is normal and does not affect the cooling effect.
- **Buzzing:** Buzzing will be generated by running compressor specially when starting up or shutting down.
- **Clatter:** The solenoid valve or electric switch valve will clatter which is a normal occurrence and does not affect the operation.
- The refrigerating chamber will periodically frost and defrost (water drops will be generated on the backside of the refrigerating chamber when defrosting) which is normal.

Recommendations

- 1 **WARNING** Keep ventilation openings, in the appliance enclosure or in the built-in structure.
- 2 **WARNING** Do not damage the refrigerant circuit.
- 3 **WARNING** Do not use electrical appliances inside the food storage compartments of the appliance, unless they are of the type recommended by the manufacturer.
- 4 The appliance has to be unplugged after use and before carrying out user maintenance on the appliance.
- 5 This appliance is not intended for use by persons (including children) with reduced physical, sensory or mental capabilities, or lack of experience and knowledge, unless they have been given supervision or instruction concerning use of the appliance by a person responsible for their safety.
- 6 Children should be supervised to ensure that they do not play with the appliance.
- 7 If the supply cord is damaged, it must be replaced by the manufacturer, its service agent or similarly qualified persons in order to avoid a hazard.
- 8 Please abandon the refrigerator-freezer according to local regulators for its use flammable blowing gas and refrigerant.
- 9 Please according to local regulations regarding disposal of the appliance for its flammable refrigerant and blowing gas. Before you scrap the appliance, please take off the doors to prevent children trapped.

Warranty

WARRANTY TERMS AND CONDITIONS REFRIGERATION APPLIANCES

→ This document sets out the terms and conditions of the product warranties for Residentia Group Appliances. It is an important document. Please keep it with your proof of purchase documents in a safe place for future reference should you require service for your Appliance.

1. In this warranty
 - (a) 'acceptable quality' as referred to in clause 10 of this warranty has the same meaning referred to in the ACL;
 - (b) 'ACL' means Trade Practices Amendment (Australian Consumer Law) Act (No.2) 2010;
 - (c) 'Appliance' means any Residentia Group product purchased by you accompanied by this document;
 - (d) 'ASR' means Residentia Group authorised service representative;
 - (e) 'Residentia Group' means Residentia Group Pty Ltd of 118 Campbell Street Collingwood VIC 3066, ACN 600 546 656 in respect of Appliances purchased in Australia;
 - (f) 'major failure' as referred to in clause 10 of this warranty has the same meaning referred to in the ACL and includes a situation when an Appliance cannot be repaired or it is uneconomic for Residentia Group, at its discretion, to repair an Appliance during the Warranty Period;
 - (g) 'Warranty Period' means:
 - (i) where the Appliance is used for personal, domestic or household use (i.e. normal single family use) as set out in the instruction manual, the Appliance is warranted against manufacturing defects in Australia for 24 months following the date of original purchase of the Appliance;
 - (h) 'you' means the purchaser of the Appliance not having purchased the Appliance for re-sale, and 'your' has a corresponding meaning.
2. This warranty only applies to Appliances purchased and used in Australia and is in addition to (and does not exclude, restrict, or modify in any way) any non-excludable statutory warranties in Australia.
3. During the Warranty Period Residentia Group or its ASR will, at no extra charge if your Appliance is readily accessible for service, without special equipment and subject to these terms and conditions, repair or replace any parts which it considers to be defective. Residentia Group or its ASR may use remanufactured parts to repair your Appliance. You agree that any replaced Appliances or parts become the property of Residentia Group. This warranty does not apply to light globes, batteries, filters or similar perishable parts.
4. Parts and Appliances not supplied by Residentia Group are not covered by this warranty.
5. You will bear the cost of transportation, travel and delivery of the Appliance to and from Residentia Group or its ASR. If you reside outside of the service area, you will bear the cost of:
 - (a) travel of an authorised representative;
 - (b) transportation and delivery of the Appliance to and from Residentia Group or its ASR, in all instances, unless the Appliance is transported by Residentia Group or its ASR, the Appliance is transported at the owner's cost and risk while in transit to and from Residentia Group or its ASR.
6. Proof of purchase is required before you can make a claim under this warranty.

Warranty continued

7. You may not make a claim under this warranty unless the defect claimed is due to faulty or defective parts or workmanship. Residentia Group is not liable in the following situations (which are not exhaustive):
- (a) the Appliance is damaged by:
 - (i) accident
 - (ii) misuse or abuse, including failure to properly maintain or service
 - (iii) normal wear and tear
 - (iv) power surges, electrical storm damage or incorrect power supply
 - (v) incomplete or improper installation
 - (vi) incorrect, improper or inappropriate operation
 - (vii) insect or vermin infestation
 - (viii) failure to comply with any additional instructions supplied with the Appliance;
 - (b) the Appliance is modified without authority from Residentia Group in writing;
 - (c) the Appliance's serial number or warranty seal has been removed or defaced;
 - (d) the Appliance was serviced or repaired by anyone other than Residentia Group, an authorised repairer or ASR.
8. This warranty, the contract to which it relates and the relationship between you and Residentia Group are governed by the law applicable where the Appliance was purchased.
9. To the extent permitted by law, Residentia Group excludes all warranties and liabilities (other than as contained in this document) including liability for any loss or damage whether direct or indirect arising from your purchase, use or non use of the Appliance.
10. For Appliances and services provided by Residentia Group in Australia, the Appliances come with a guarantee by Residentia Group that cannot be excluded under the Australian Consumer Law. You are entitled to a replacement or refund for a major failure and for compensation for any other reasonably foreseeable loss or damage. You are also entitled to have the Appliance repaired or replaced if the Appliance fails to be of acceptable quality and the failure does not amount to a major failure. The benefits to you given by this warranty are in addition to your other rights and remedies under a law in relation to the Appliances or services to which the warranty relates.
11. At all times during the Warranty Period, Residentia Group shall, at its discretion, determine whether repair, replacement or refund will apply if an Appliance has a valid warranty claim applicable to it.
12. To enquire about claiming under this warranty, please follow these steps:
- (a) carefully check the operating instructions, user manual and the terms of this warranty;
 - (b) have the model and serial number of the Appliance available;
 - (c) have the proof of purchase (e.g. an invoice) available;
 - (d) telephone the numbers shown below.
13. You accept that if you make a warranty claim, Residentia Group and its ASR may exchange information in relation to you to enable Residentia Group to meet its obligations under this warranty.

IMPORTANT Before calling for service, please ensure that the steps in point 12 have been followed.

Service: Please call 1300 11 HELP (4357)

Model Code/s:

EBF95W

EBF95S

Residentia



E2447